



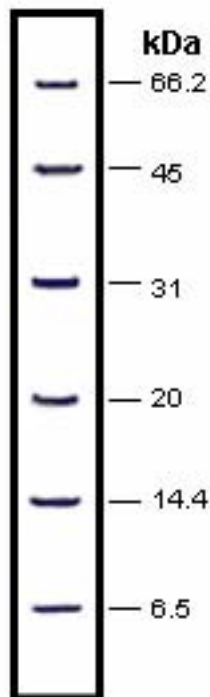
PRODUCT INFORMATION

Catalog No.: LRPM203-50, 203-250

Product Name: **Protein Marker: Unstained, Low Range**

Description: The Low Range Protein Marker can be used as an unstained protein marker. It is a mixture of purified proteins of known molecular weights used as standards in determining the molecular weight of unknown proteins run on SDS-polyacrylamide gel electrophoresis (SDS-PAGE). The Low Range Marker displays 6 protein bands from 6.5-66.2KDa, and is useful on acrylamide gels of varying concentrations.

Tech Note: The marker is in a ready-to-use format. It can be directly loaded into the designated lane(s) for the protein standard. However, it can be diluted into the same buffer used for sample preparation. This protein marker mixture is custom-blended to yield protein bands of clear intensity when stained using standard Coomassie Brilliant Blue staining procedures. Acrylamide gels with a gel concentration above 10%, or a gradient gel, should be used for this protein marker.



	MW (KDa)
Bovine Serum Albumin	66.2
Ovalbumin	45
Carbonic Anhydrase	31
Soybean Trypsin Inhibitor	20
Lysozyme	14.4
Aprotinin	6.5
Package Size	50 Loadings; 5X50 Loadings
Recommended gel conc.	10-20%
Storage	-20°C

	Size	Catalog No.
Protein Markers:	50 Loadings	LRPM203-50
Unstained, Low Range	250 Loadings	LRPM203-250