



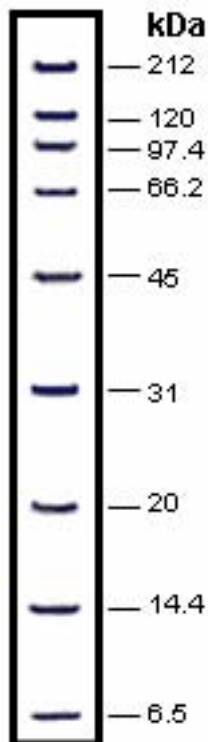
PRODUCT INFORMATION

Catalog No.: WRPM204-50, 204-250

Product Name: **Protein Marker: Unstained, Wide Range**

Description: The Wide Range Protein Marker is made by mixing nine purified proteins of known molecular weights. It is used as a standard in determining the molecular weight of unknown proteins run on SDS-polyacrylamide gel electrophoresis (SDS-PAGE). The wide range marker displays nine protein bands ranging from 6.5-212KDa and is useful on acrylamide gels of varying concentrations.

Tech Note: The marker is in a ready-to-use format. It can be loaded directly into the designated lane(s) for the protein standard. However, it can be diluted into the same buffer used for sample preparation. This protein marker is custom-blended to yield protein bands of clear intensity when stained using standard Coomassie Brilliant Blue staining procedures.



	MW (KDa)
Myosin	212
β-Galactosidase	120
Phosphorylase B	97.4
Bovine Serum Albumin	66.2
Ovalbumin	45
Carbonic Anhydrase	31
Soybean Trypsin Inhibitor	20
Lysozyme	14.4
Aprotinin	6.5
Package Size	50 Loadings, 5X50 Loadings
Recommended gel conc.	6-10%
Storage	-20oC

	Size	Catalog No.
Protein Markers:	50 Loadings	WRPM204-50
Unstained, Wide Range	250 Loadings	WRPM204-250